

Virtual consulting capabilities – Protecting your people, information and business

As ever, organizations need to address the information resilience challenge and continue to focus on their cybersecurity, data management and privacy strategies targeted at protecting their people, information and business. BSI is here to help with our suite of advanced remotely delivered services

Remote security testing and enterprise security technology

Many organizations are managing recurring internal and external security testing tasks. Performing those activities remotely will allow you to continuously identify vulnerabilities while not having security testing personnel required onsite. BSI's security testing consultants are experts in the delivery of remote services. We also provide enterprise security technology delivered using remote techniques. Take our web security capabilities; implemented via a remote site, leveraging our cloud-based technology partners' infrastructure along with our specialist cloud security consultancy team

Forensic and information management services

eDiscovery, digital forensic support and information management services are remotely available through our secure collaboration solutions. Our consultants deliver offsite services to allow our clients to avoid disruption in mandatory legal and critical activities. Should you receive a Data Subject Access Requests (DSARs), for example, with our remote techniques BSI can help you fulfil this requirement promptly

Business continuity and disaster recovery

BSI's business continuity and information resilience services allows your organization to perform business as usual activities in the event of a natural disaster, data breach or halt to your operations. BSI's consultants can provide advisory services such as systems implementation, impact assessment and disaster recovery techniques to ensure that your business can continue to operate as close to full capacity as possible

Incident management

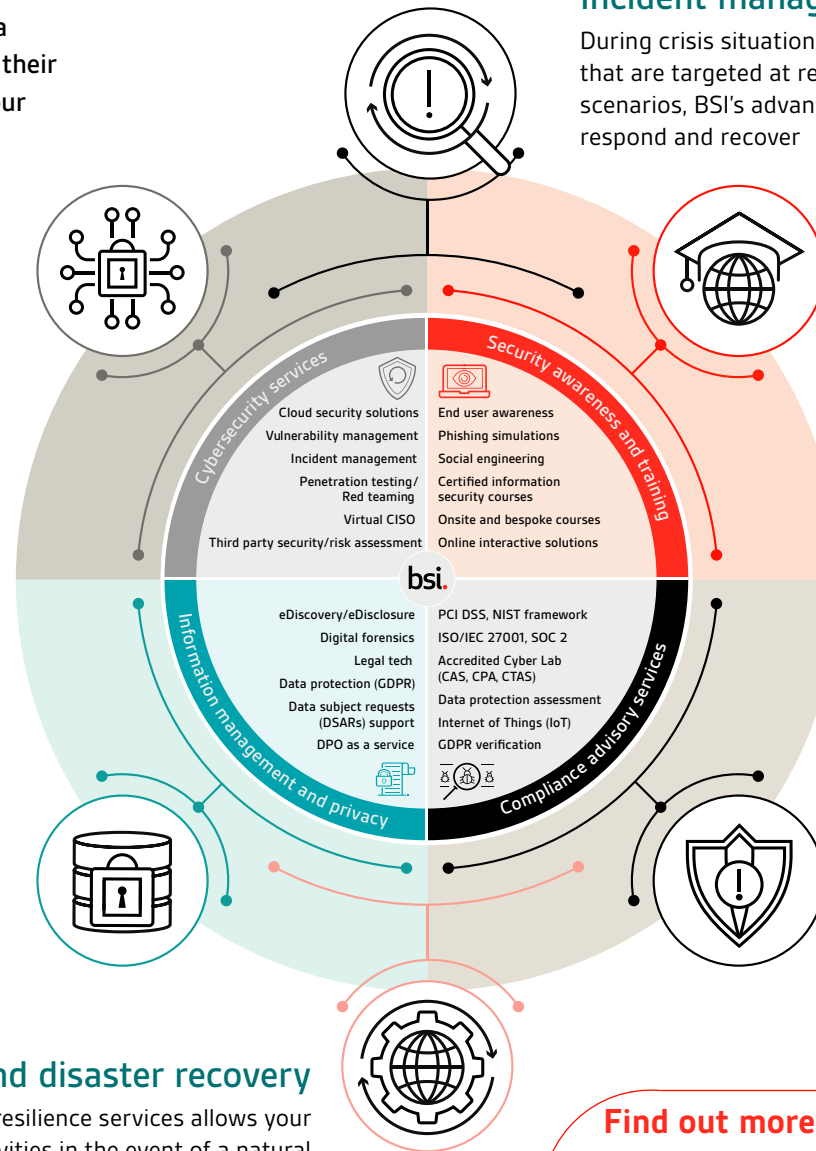
During crisis situations, organizations are more vulnerable to cyber-attacks, that are targeted at remote users or overwhelmed teams. In those complex scenarios, BSI's advanced incident management capabilities help you respond and recover

Online training

Upskilling employees is a fundamental requirement in reducing the risks caused by human related cyberattacks such as phishing. Our SaaS based security awareness platform and virtual training courses can be delivered remotely and seamlessly ensuring an enhanced client experience. Moreover, our tutor-led interactive learning courses can now bring the classroom to you

Cyber, risk and advisory (CRA) services

Security governance services are important for an effective security program. Our CRA services include ISO/IEC27001 consultancy, implementation support, gap analysis, NIST CSF advisory, GDPR and CCPA services, Data Protection Officer (DPOaaS) services, Data Protection Impact (DPI) assessments, PCI DSS consulting and compliance services. All of these and other CRA services are regularly delivered remotely by BSI consultants



Find out more

IE/International

Call: +353 1 210 1711

Email: digitaltrust.consulting@bsigroup.com

.IE@bsigroup.com

Visit: bsigroup.com/digital-trust

UK

+44 345 222 1711

digitaltrust.consulting@bsigroup.com

@bsigroup.com

bsigroup.com/digital-trust

US

+1 800 862 4977

digitaltrust.consulting@bsigroup.com

US@bsigroup.com

bsigroup.com/digital-trust

Disclaimer

BSI is an accredited Certification Body for Management System Certification and Product certification. No BSI Group company may provide management system consultancy or product consultancy that could be in breach of accreditation requirements. Clients who have received any form of management system consultancy or product consultancy from any BSI Group company are unable to have BSI certification services within a 2 year period following completion of consultancy.